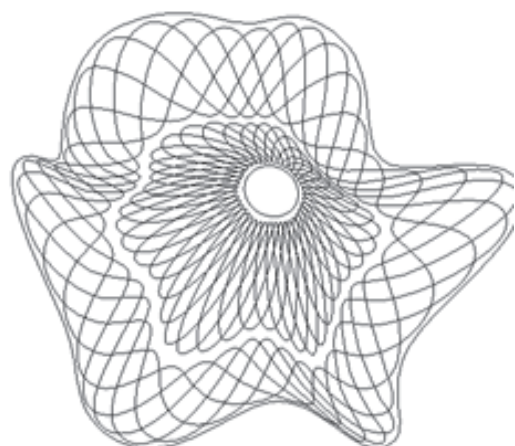
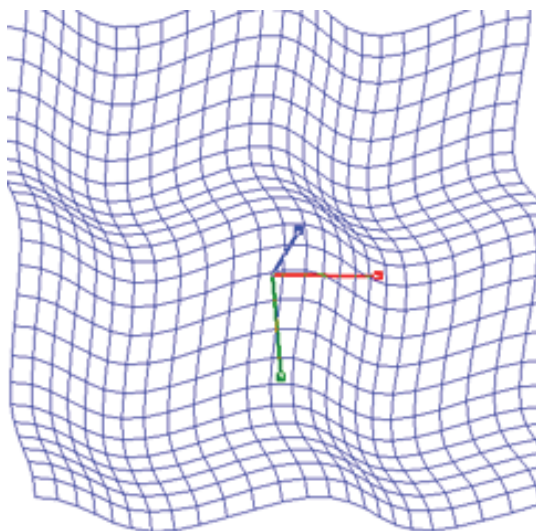
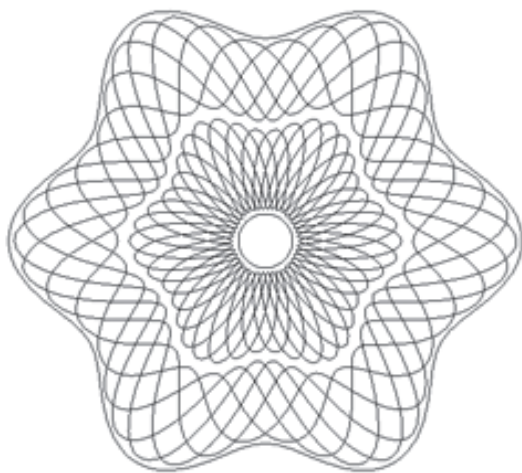


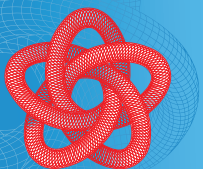
cerberus®  
Professional Guilloche  
Editor

GuardSoft®

25 Aphrodite str., office 204,  
1666, Nicosia, Cyprus  
tel.: +357 22 503804  
fax: +357 22 503704  
[www.guard-soft.com](http://www.guard-soft.com)

Plug-in filter for CERBERUS® **3D-surface** – overlays (transfers) a guilloche over a 3D-surface, which can be introduced as a formula or imported as a grayscale image. Allows creating irregular guilloches; is available in standard delivery.



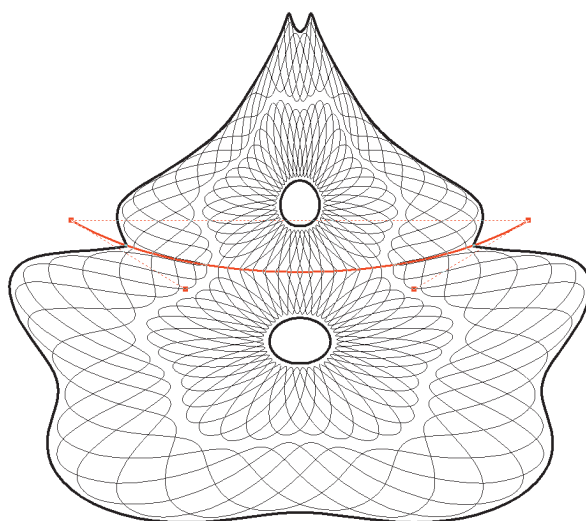
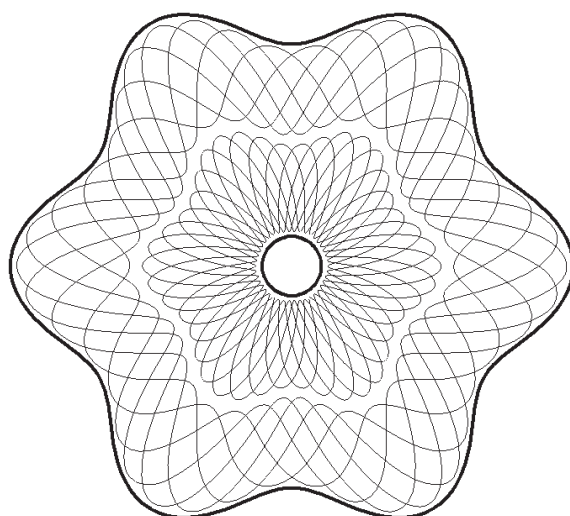


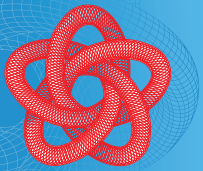
cerberus®  
Professional Guilloche  
Editor

GuardSoft®

25 Aphrodite str., office 204,  
1666, Nicosia, Cyprus  
tel.: +357 22 503804  
fax: +357 22 503704  
[www.guard-soft.com](http://www.guard-soft.com)

Plug-in filter for CERBERUS® **Mirror Warp** – cuts and «mirrors» a free guilloche fragment at any angle. «Mirroring» is done not along a straight line, but along a curve spline which can be set by the User.



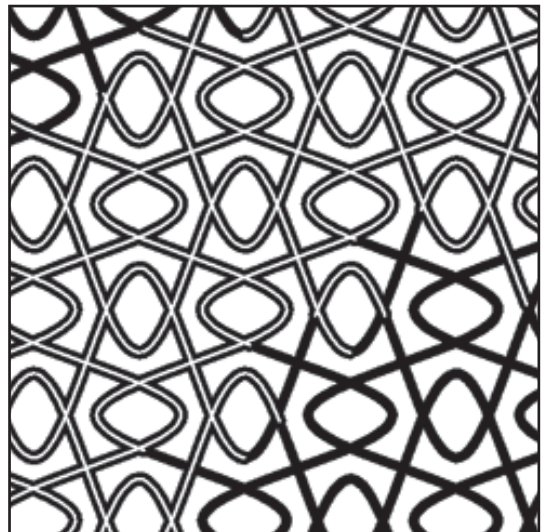
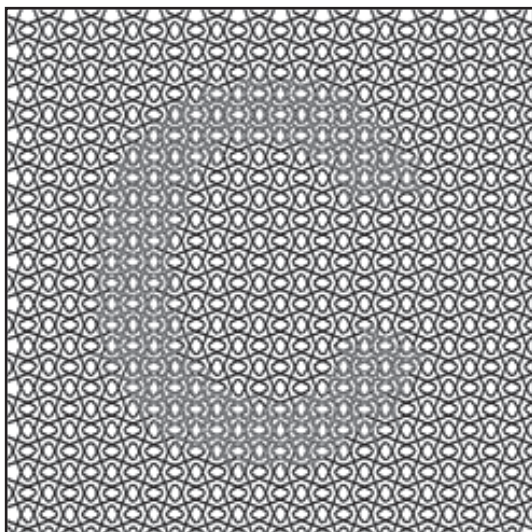
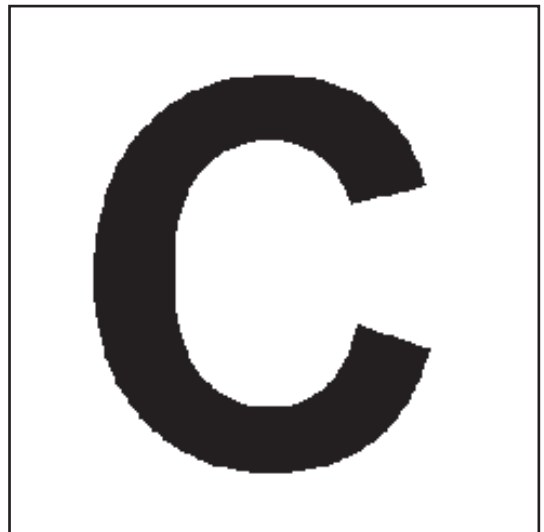
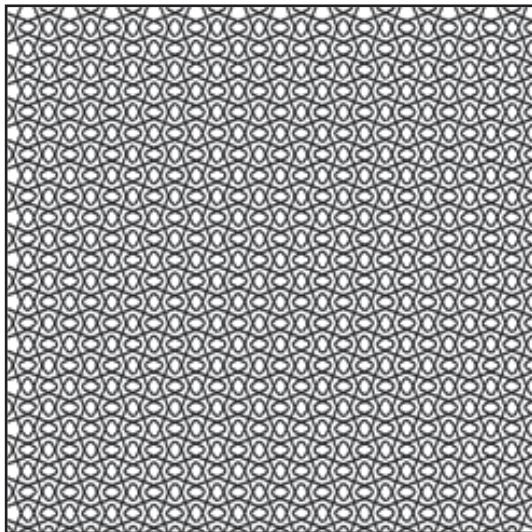


cerberus®  
Professional Guilloche  
Editor

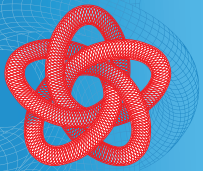
GuardSoft®

25 Aphrodite str., office 204,  
1666, Nicosia, Cyprus  
tel.: +357 22 503804  
fax: +357 22 503704  
[www.guard-soft.com](http://www.guard-soft.com)

Plug-in filter for CERBERUS® **Double Line** – is an anti-copy effect achieved due to splitting a guilloche line into two or more lines. As a result some parts of the guilloche image will consist of double lines; width of each line is less compared to the source line.





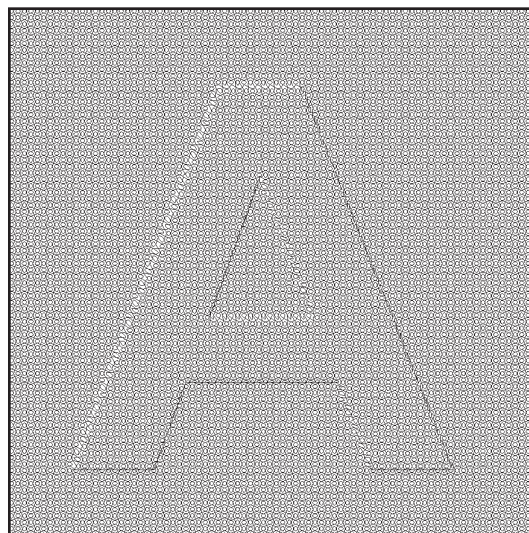
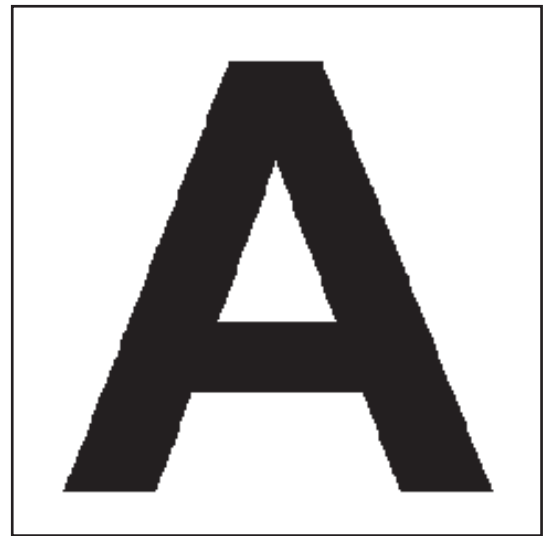
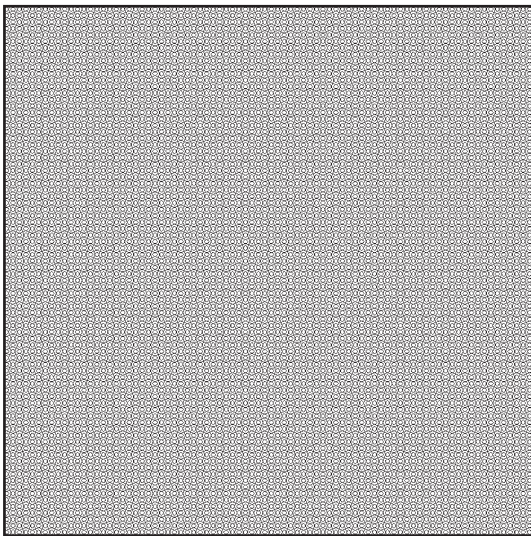


cerberus®  
Professional Guilloche  
Editor

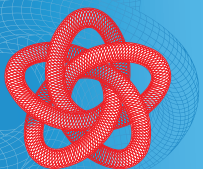
GuardSoft®

25 Aphrodite str., office 204,  
1666, Nicosia, Cyprus  
tel.: +357 22 503804  
fax: +357 22 503704  
[www.guard-soft.com](http://www.guard-soft.com)

Plug-in filter for CERBERUS® **Emboss** – is designed for creating relief or «embossed» images. The effect is achieved due to displacement of the source guilloche lines under a User-specified algorithm.





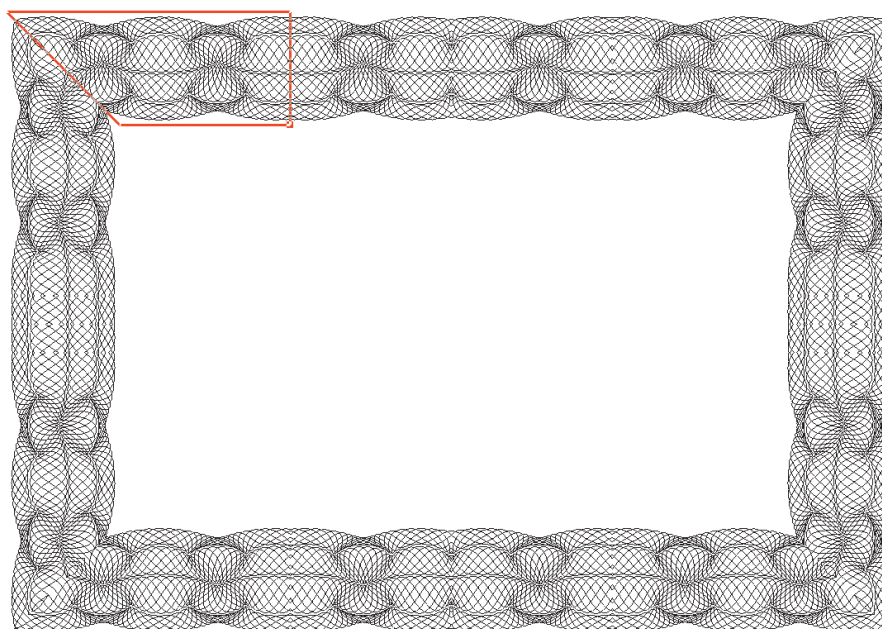
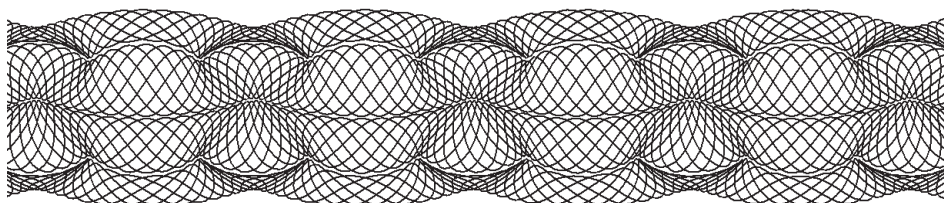


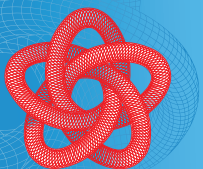
cerberus®  
Professional Guilloche  
Editor

GuardSoft®

25 Aphrodite str., office 204,  
1666, Nicosia, Cyprus  
tel.: +357 22 503804  
fax: +357 22 503704  
[www.guard-soft.com](http://www.guard-soft.com)

Plug-in filter for CERBERUS® **Frame** – is designed for fast creation of rectangular frames of given dimensions and width.



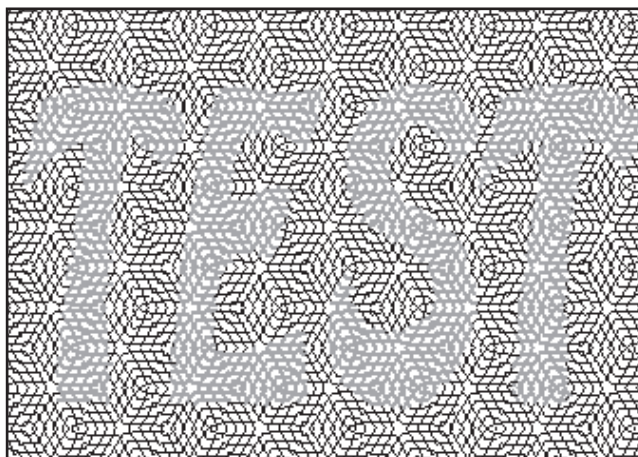
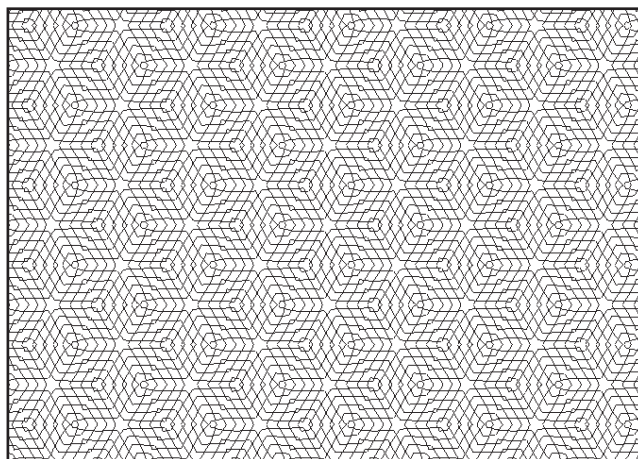


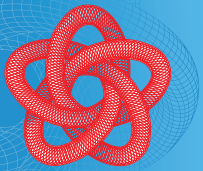
cerberus®  
Professional Guilloche  
Editor

GuardSoft®

25 Aphrodite str., office 204,  
1666, Nicosia, Cyprus  
tel.: +357 22 503804  
fax: +357 22 503704  
[www.guard-soft.com](http://www.guard-soft.com)

Plug-in filter for CERBERUS® **Gray Copy** – is an anti-copy effect obtained due to partial rasterization of a guilloche line with optical width compensation. At that a hidden image is created that will develop by photocopying.



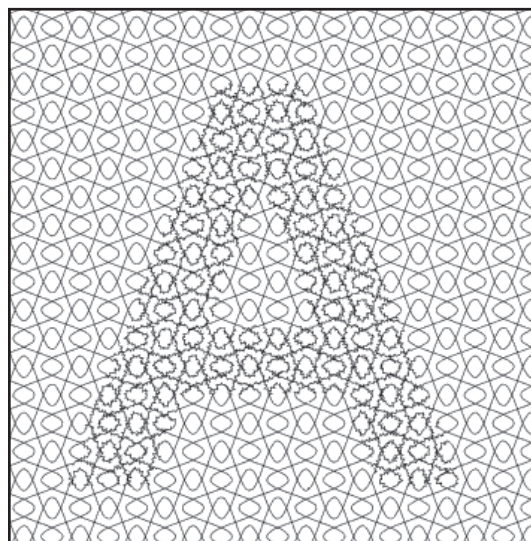
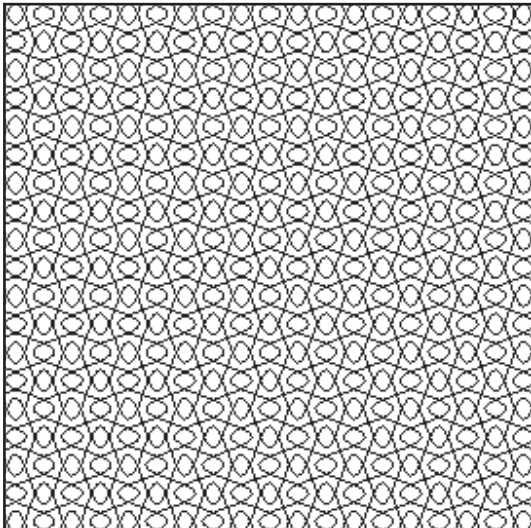
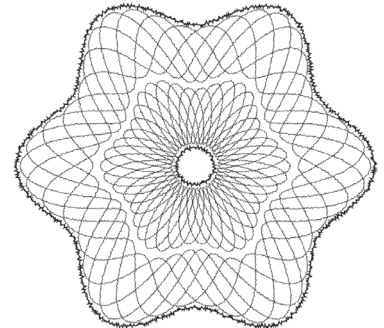


cerberus®  
Professional Guilloche  
Editor

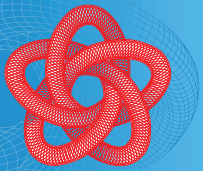
GuardSoft®

25 Aphrodite str., office 204,  
1666, Nicosia, Cyprus  
tel.: +357 22 503804  
fax: +357 22 503704  
[www.guard-soft.com](http://www.guard-soft.com)

Plug-in filter for CERBERUS® **Jitterprint** – is an effect that introduces micro-errors in a random way (lines jitter distortion, lines width modification).





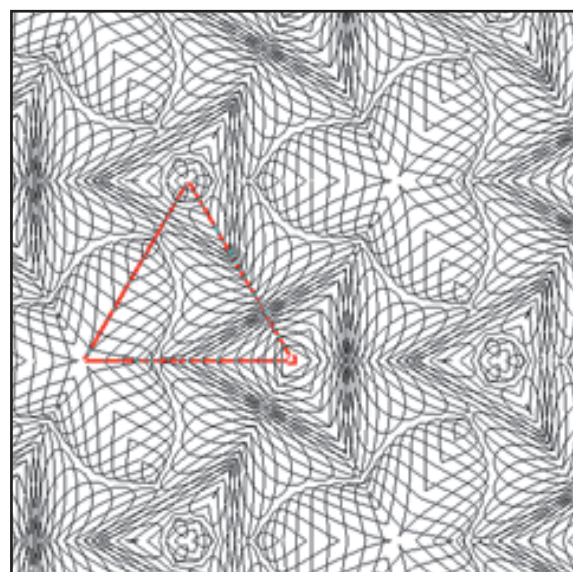
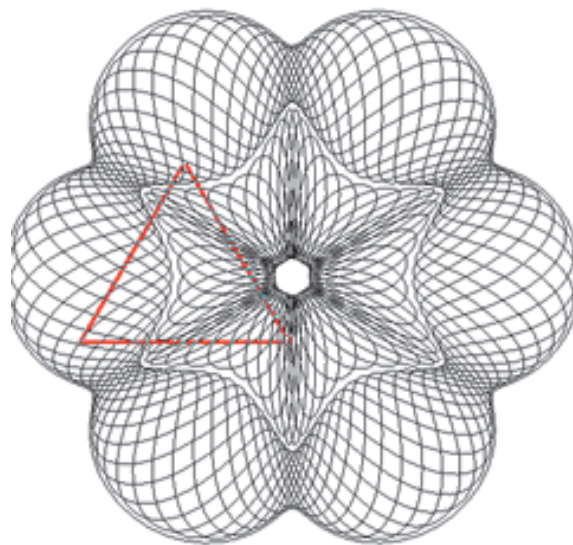


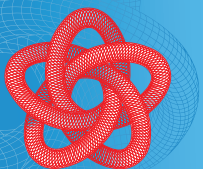
cerberus®  
Professional Guilloche  
Editor

GuardSoft®

25 Aphrodite str., office 204,  
1666, Nicosia, Cyprus  
tel.: +357 22 503804  
fax: +357 22 503704  
[www.guard-soft.com](http://www.guard-soft.com)

Plug-in filter for CERBERUS® **Kaleidoscope** – multiplies a free guilloche fragment over a big surface, employs three «mirrors». As a result a new guilloche of a kaleidoscope type is created.



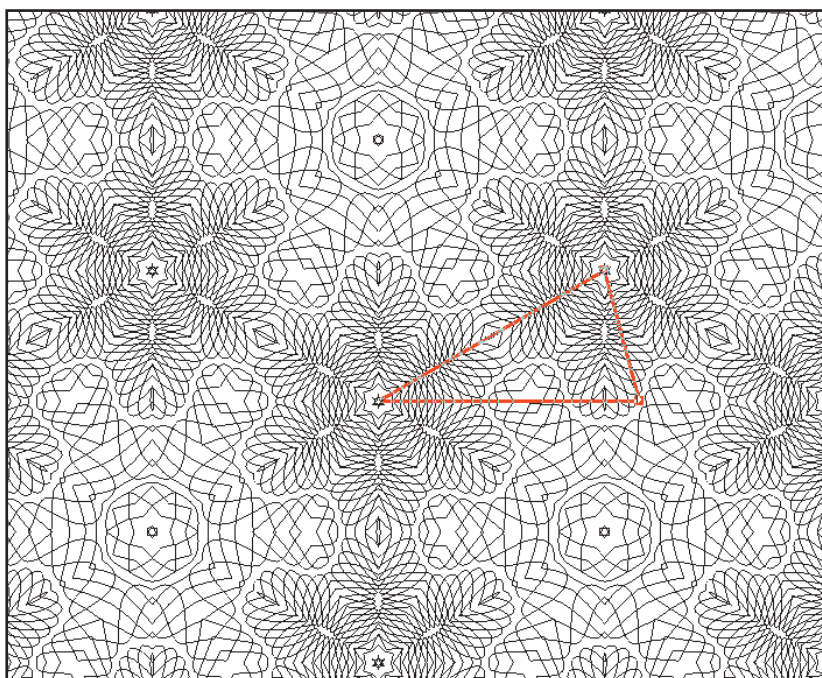
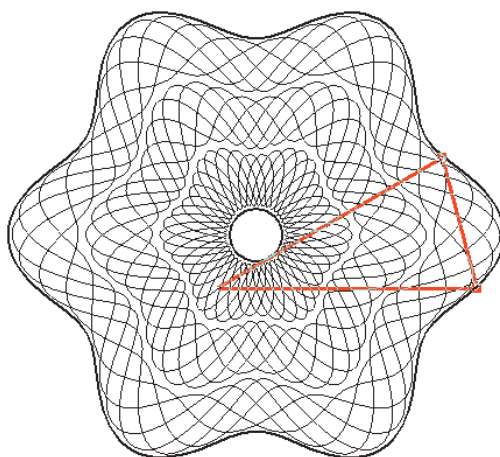


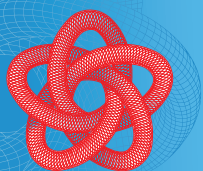
cerberus®  
Professional Guilloche  
Editor

GuardSoft®

25 Aphrodite str., office 204,  
1666, Nicosia, Cyprus  
tel.: +357 22 503804  
fax: +357 22 503704  
[www.guard-soft.com](http://www.guard-soft.com)

Plug-in filter for CERBERUS® **Kaleidoscope PRO** – multiplies a free guilloche fragment over a big surface. Can employ any number of «mirrors» (up to 36); the «mirrors» can be turned at a free angle.



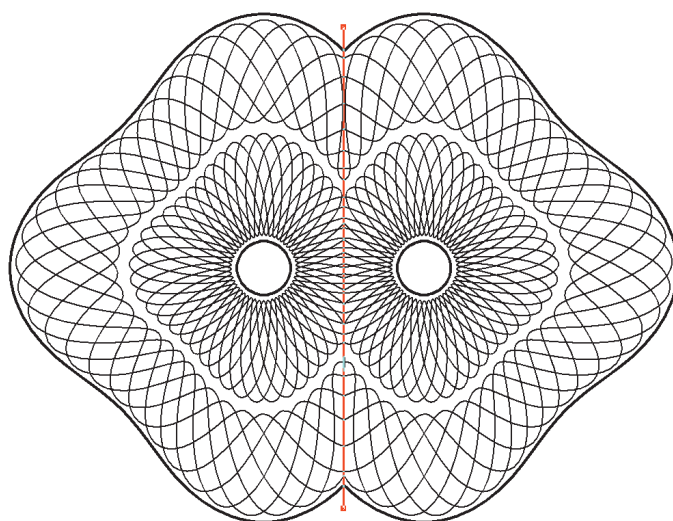
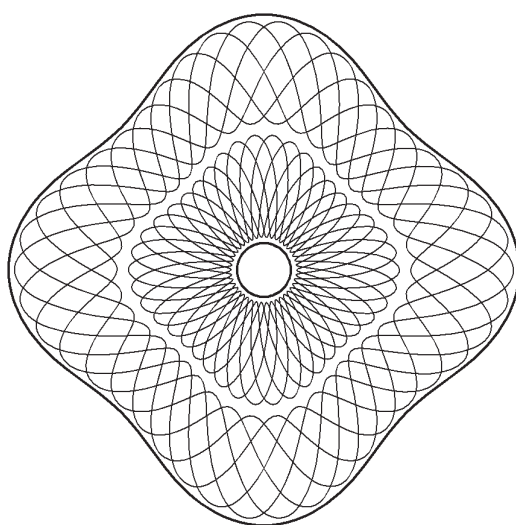


cerberus®  
Professional Guilloche  
Editor

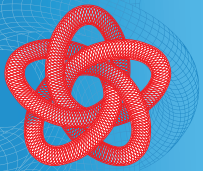
GuardSoft®

25 Aphrodite str., office 204,  
1666, Nicosia, Cyprus  
tel.: +357 22 503804  
fax: +357 22 503704  
[www.guard-soft.com](http://www.guard-soft.com)

Plug-in filter for CERBERUS® **Mirror** – cuts and «mirrors» a free guilloche fragment at any angle, at that the fragments are joined seamlessly. «Mirroring» is effected along a straight line.





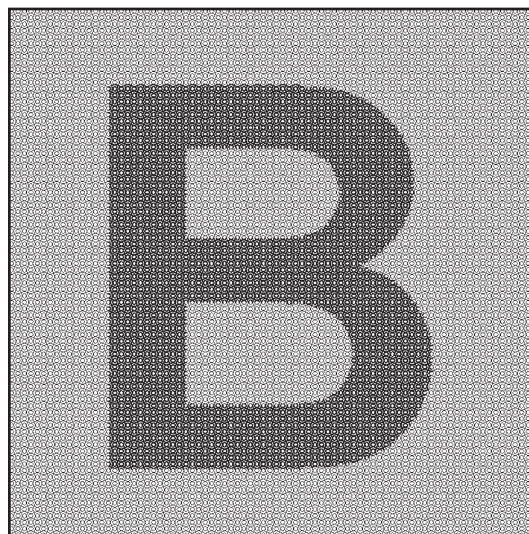
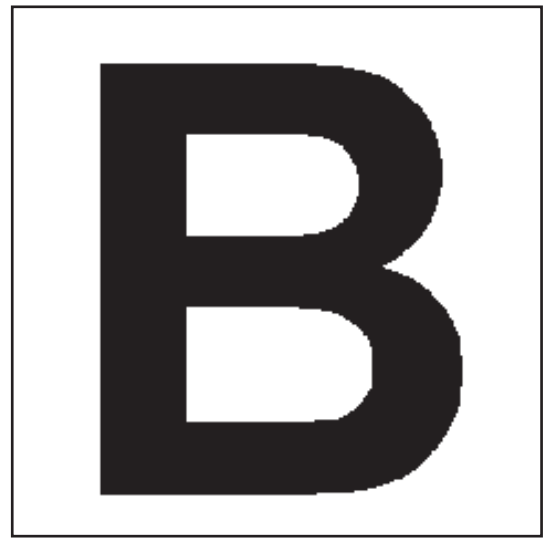
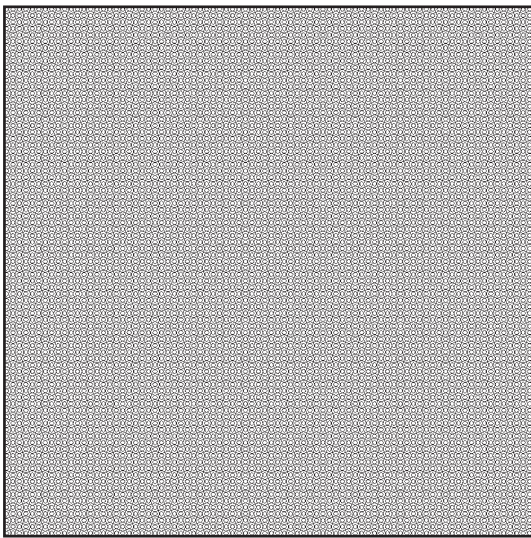


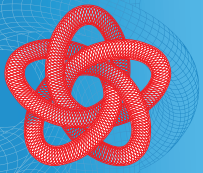
cerberus®  
Professional Guilloche  
Editor

GuardSoft®

25 Aphrodite str., office 204,  
1666, Nicosia, Cyprus  
tel.: +357 22 503804  
fax: +357 22 503704  
[www.guard-soft.com](http://www.guard-soft.com)

Plug-in filter for CERBERUS® **Variable width** – overlays images on guilloche elements. The effect is achieved due to changing guilloche lines width.



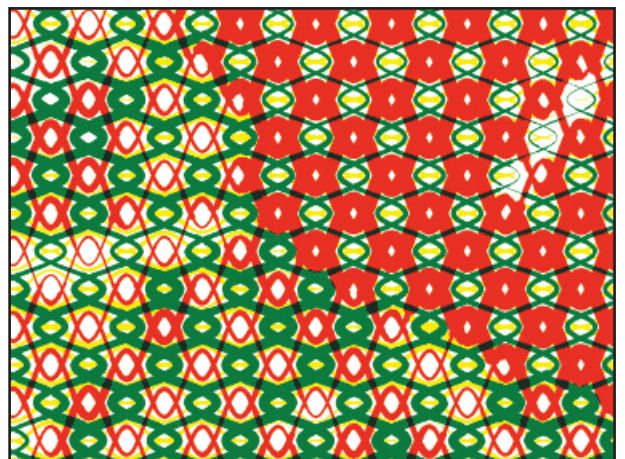
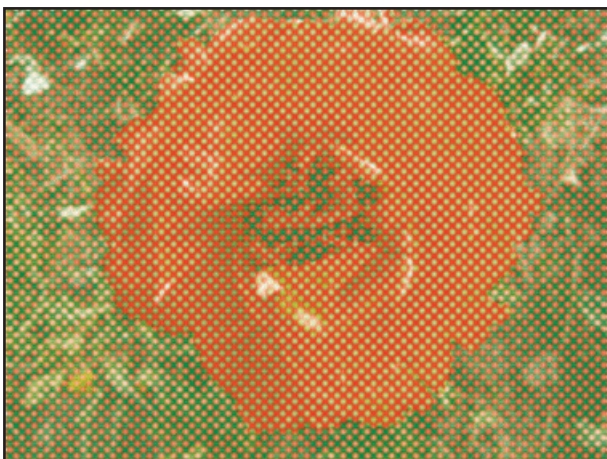
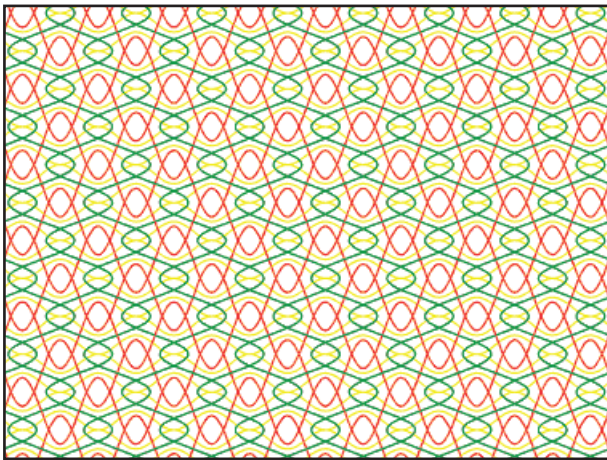


cerberus®  
Professional Guilloche  
Editor

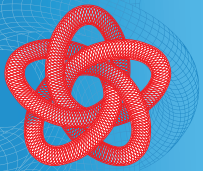
GuardSoft®

25 Aphrodite str., office 204,  
1666, Nicosia, Cyprus  
tel.: +357 22 503804  
fax: +357 22 503704  
[www.guard-soft.com](http://www.guard-soft.com)

Plug-in filter for CERBERUS® **Variable color** – separates colors in a raster image (color filter).  
Modulates guilloche lines width depending on colors matching.







cerberus®  
Professional Guilloche  
Editor

GuardSoft®

25 Aphrodite str., office 204,  
1666, Nicosia, Cyprus  
tel.: +357 22 503804  
fax: +357 22 503704  
[www.guard-soft.com](http://www.guard-soft.com)

Plug-in filter for CERBERUS® **Multicolor** – allows creating a full-color image in which guilloche figures serve as «raster lines». Modulates guilloche lines width by means of a color raster image. Is designed for offset printing, so the number of used colors should correspond to the number of ink mileages.

